

# PROACT.®

**REFERENCE :** PA481

**SIZES :** XS S M L XL XXL

**COMPOSITION :**

Main fabric : Interlock 155 For front, back & sleeve 100% polyester

Main fabric : Interlock 155 For shoulder seam piping, inner side slit & neckline cleanness. 100%polyester

**WEIGHT :**

Main fabric : 155gsm

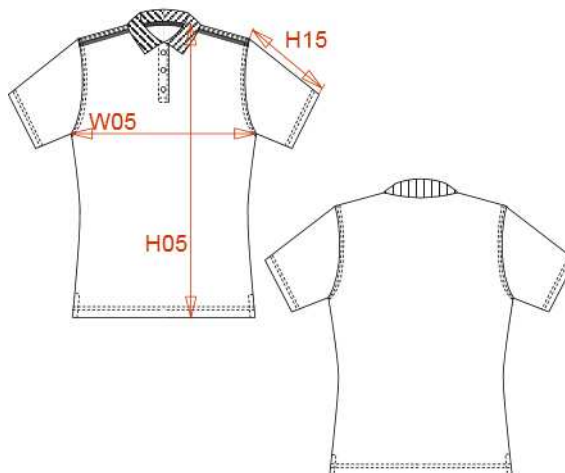
Main fabric : 155gsm

**FABRIC CONSTRUCTION AND FINISHING :**

Quick dry fabric

**ARTICLE WEIGHT :**

114 gr/pc



DESCRIPTION	
<b>Français :</b> Polo manches courtes femme	
<b>English :</b> Ladies' short sleeve polo shirt	
<b>Nederlands :</b> Dames sportpolo korte mouwen	
<b>Deutsch :</b> KURZARM DAMEN POLO QUICK DRY	
<b>Español :</b> Polo de manga corta para mujer	
<b>Italiano :</b> POLO DONNA MANICHE CORTE	
<b>Português :</b> Polo de senhora de manga curta	

COLORS	PANTONE SERIGRAPHIE
Black	Black
White	White
Navy	296C
Sporty red	186C
Sporty royal blue	300C

MEASUREMENT									
Description	Tol +/-	Tol +/- Taille max	XS	S	M	L	XL	XXL	
<b>H05</b> Hauteur totale / Total height			58,50	60,10	61,50	63	64,50	66,80	
<b>W05</b> 1/2 largeur poitrine / 1/2 chest width	2,5%	2,0%	42	44	46	48	50	53	
<b>H15</b> Longueur manche / Sleeve length			9,80	11	12,20	13,40	14,60	16	

CARE LABEL				

PACKING	
Box	25 pcs / box XS-S => L:43cm W:32cm H:16cm GW:3.60kg NW:3.10kg M-XL => L:48cm W:34cm H:16cm GW:4.10kg NW:3.60kg XXL => L:52cm W:36cm H:16cm GW:5.10kg NW:4.50kg