

KARIBAN

REFERENCE : KV2207

SIZES : XS_S_M_L_XL_XXL

COMPOSITION :

Main fabric : Combed cotton pique - 220 100%cotton

Main fabric : Combed cotton / viscose pique 98/2 - 220 98%
cotton / 2%viscose

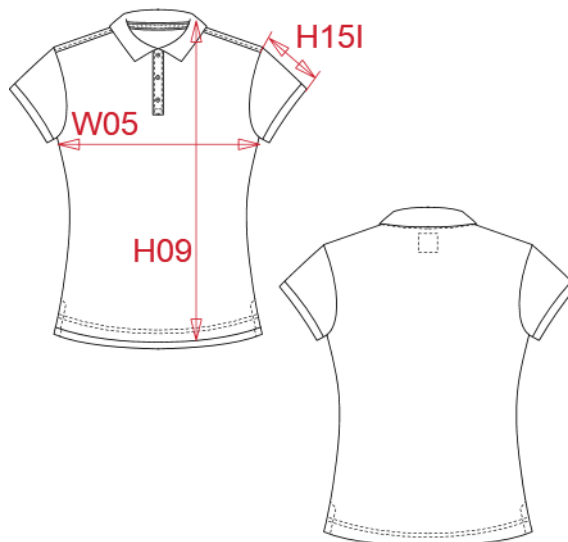
WEIGHT :

Main fabric : 220 gsm

Main fabric : 220 gsm

ARTICLE WEIGHT :

190 gr/pc



DESCRIPTION
Français : Polo vintage manches courtes femme
English : Ladies' vintage short sleeve polo shirt
Nederlands : Vintage damespolo met korte mouwen
Deutsch : Kurzarm-Polohemd für Damen im Vintage-Stil
Español : Polo vintage manga corta mujer
Italiano : Polo donna vintage manica corta
Português : Polo vintage de senhora de manga curta

COLORS	PANTONE SERIGRAPHIE
Vintage navy	533C
Vintage charcoal	447C
Vintage dark red	202C
Ash heather	Based on Warm gray 1C
Slub grey heather	Based on 7539C
Night blue heather	Based on 432C

MEASUREMENT							
Description	XS	S	M	L	XL	XXL	
H09 (L) Hauteur totale devant / Front total height	59,50	61,50	63,50	65,50	67,50	69,50	
W05 (L) 1/2 largeur poitrine à 1.5cm de l'emmanchure / 1/2 chest width at 1.5cm below armhole	43	46	49	52	55	58	
H15I (L) Longueur manche avec bord côte / Sleeve length with rib	13,50	14	14,50	15	15,50	16	

CARE LABEL

PACKING	
Box	30 pcs / box XS => L:60cm W:40cm H:18cm GW:6.9kg NW:5.7kg S => L:60cm W:40cm H:18cm GW:7.2kg NW:6kg M => L:60cm W:40cm H:18cm GW:7.7kg NW:6.5kg L => L:60cm W:40cm H:20cm GW:8.2kg NW:7kg XL => L:60cm W:40cm H:20cm GW:8.7kg NW:7.5kg XXL => L:60cm W:40cm H:20cm GW:9.6kg NW:8.5kg