

KARIBAN

REFERENCE : K6112

SIZES : 6/8_8/10_10/12_12/14

COMPOSITION :

Main fabric : Polyamide 380T PA coating- 35 100%polyamide

Main fabric : Polyamide 380T PA coating- 35 For inside garment and pockets 100%polyamide

Wad 1 : Padding Polyester fake down (micro broken) - 260/270

Inside body,sleeve and hood 100%polyester

WEIGHT :

Main fabric : 35 gsm

Main fabric : 35 gsm

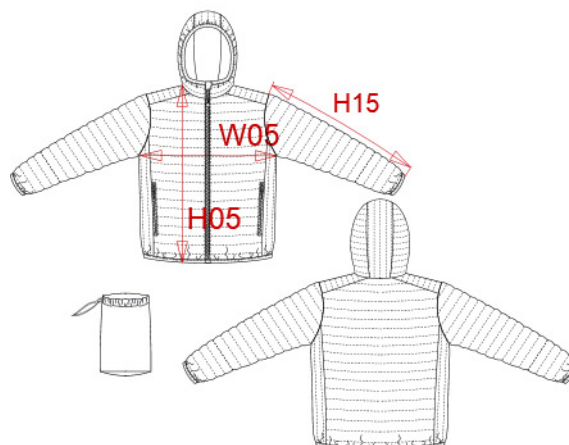
Wad 1 : 260/270 gsm

TECHNICAL DETAIL :

Coating for fake down proof

ARTICLE WEIGHT :

350 gr/pc



DESCRIPTION	
Français :	Doudoune légère capuche enfant
English :	Kids' lightweight hooded down jacket
Nederlands :	Lichte kinderjas met capuchon
Deutsch :	Leichte Kinder-Steppjacke mit Kapuze
Español :	Chaqueta acolchada ligera con capucha para niño
Italiano :	Piumino bambino leggero con cappuccio
Português :	Blusão de criança acolchoado leve com capuz

COLORS	PANTONE SERIGRAPHIE
Black	Black
Navy	433C
Light royal blue	653C
Red	200C

MEASUREMENT						
Description	6/8	8/10	10/12	12/14		
H05 Hauteur totale terminée/ Total height after sewing	47,50	53	57,75	62,50		
W05 1/2 largeur poitrine terminée/ 1/2 chest width after sewing	39,50	42,50	45,50	48,50		
H15 Longueur manche / Sleeve length	47,25	53,50	57,25	61		

CARE LABEL				

PACKING	
Box	15 pcs / box 6/8 => L: 60cm W: 40cm H: 26cm GW: 5.9kg NW: 4.5kg 8/10 => L: 60cm W: 40cm H: 26cm GW:6.3kg NW: 5kg 10/12 => L: 60cm W: 40cm H: 26cm GW: 6.9kg NW: 5.6kg 12/14=> L: 60cm W: 40cm H: 26cm GW:7.5 kg NW: 6.2kg