

# KARIBAN

REFERENCE : K516

SIZES : S\_M\_L\_XL\_XXL\_3XL

**COMPOSITION :**

Main fabric : Cotton oxford - 130 For white color 100%cotton

Main fabric : Cotton oxford - 135 100%cotton

Main fabric : Cotton oxford - 135 For contrasted piping on inner collar band and inner cuff. 100%cotton

**WEIGHT :**

Main fabric : 130 gsm

Main fabric : 135 gsm

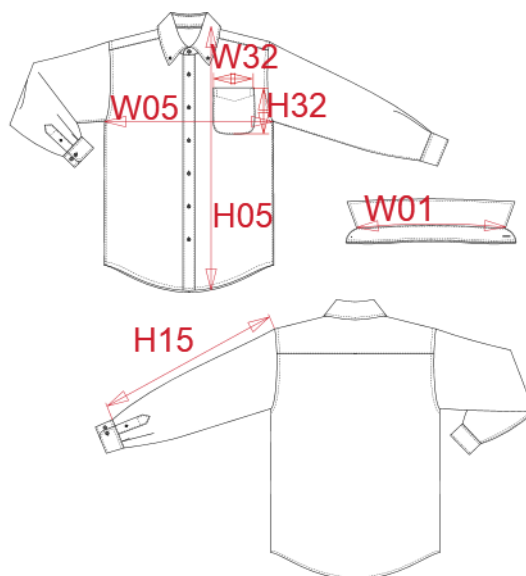
Main fabric : 135 gsm

**TECHNICAL DETAIL :**

Garment washed

**ARTICLE WEIGHT :**

255 gr/pc



DESCRIPTION
<b>Français :</b> Chemise oxford lavée manches longues homme
<b>English :</b> Men's long sleeve washed oxford shirt
<b>Nederlands :</b>
<b>Deutsch :</b> PFLEGELEICHTES HERREN LANGARM OXFORD-HEMD
<b>Español :</b> CAMISA DE MANGA LARGA LAVADA OXFORD PARA HOMBRE
<b>Italiano :</b> CAMICIA UOMO OXFORD LAVATO MANICHE LUNGHE
<b>Português :</b> Camisa manga comprida pré lavada em Oxford

COLORS	PANTONE SERIGRAPHIE
White	White
Oxford blue	Based on 651C
Striped White / Oxford blue	White / Based on 651C

MEASUREMENT						
Description	S	M	L	XL	XXL	3XL
<b>W01</b> Longueur encolure / Neckline length	41,25	42,50	43,75	45	46,25	47,50
<b>W05</b> 1/2 largeur poitrine / 1/2 chest width	51	54	57	60	63	66
<b>H05</b> Hauteur totale dos / Back total height	76	78	80	82	84	86
<b>H15</b> Longueur manche sans poignet / Sleeve length without cuff	61,50	62,50	63,50	64,50	65,50	66,50
<b>H32</b> Hauteur poche devant / Front pocket height	13	13	14	14	15	15
<b>W32</b> Largeur poche devant / Front pocket width	12	12	13	13	14	14

CARE LABEL

PACKING	
Box	12 pcs / box S => L:60cm W:40cm H:20cm GW:5.22kg NW:3.47kg M => L:60cm W:40cm H:20cm GW:5.37kg NW:3.62kg L => L:60cm W:40cm H:20cm GW:5.55kg NW:3.80kg XL => L:60cm W:40cm H:20cm GW:5.71kg NW:3.96kg XXL => L:60cm W:40cm H:20cm GW:5.85kg NW:4.10kg 3XL => L:60cm W:40cm H:20cm GW:6.11kg NW:4.36kg